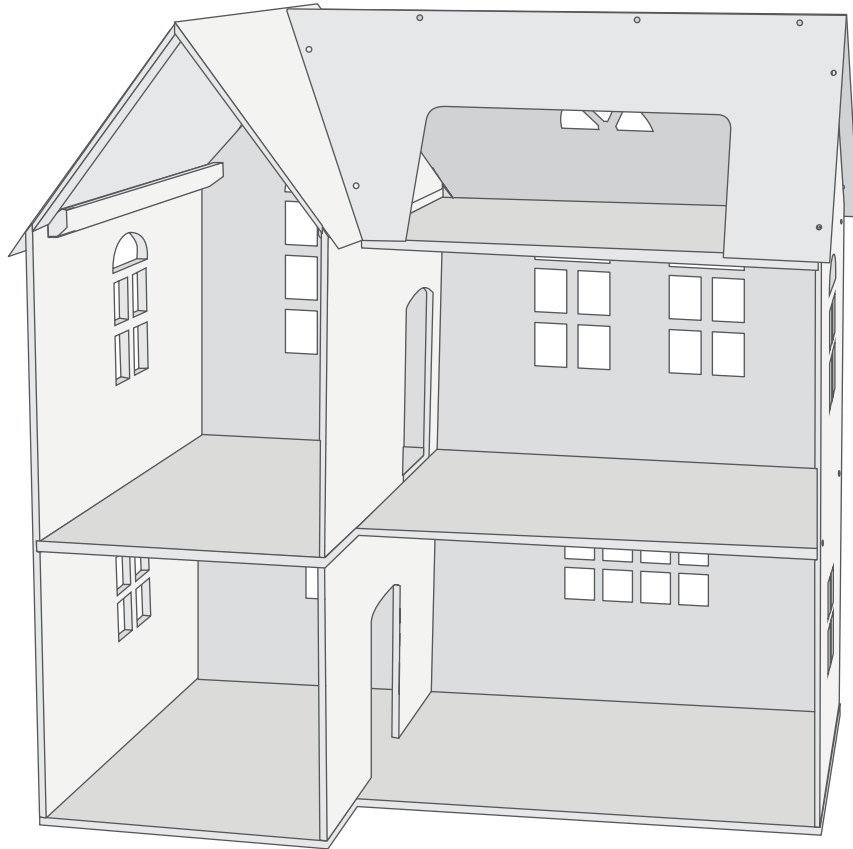


Assembly instructions

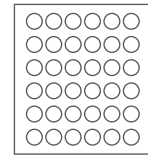
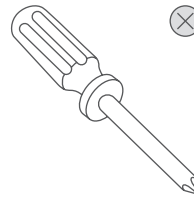
House of miniature



Before you start

Caution and care must be taken in the unpacking and assembly of this product.

YOU WILL NEED:



Stickers

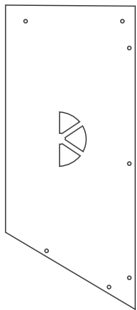
PARTS LIST:



A1 x 17



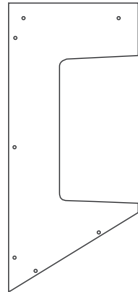
A2 x 28



B x 1



C x 1



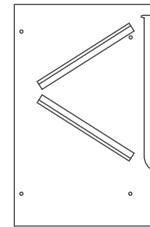
D x 1



E x 1



F x 1



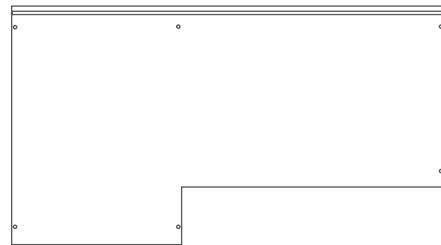
G x 1



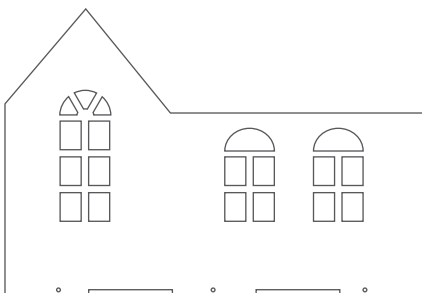
H x 2



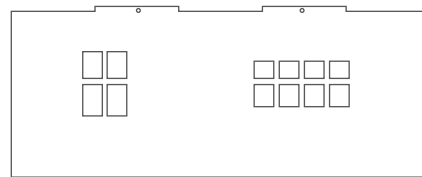
I x 1



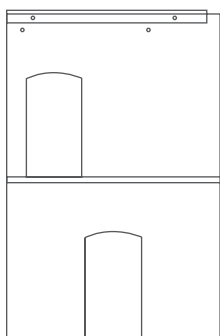
J x 1



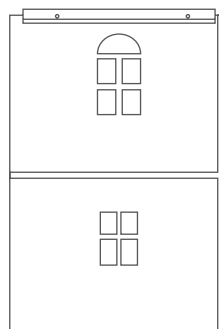
K x 1



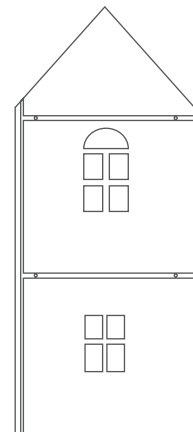
L x 1



M x 1



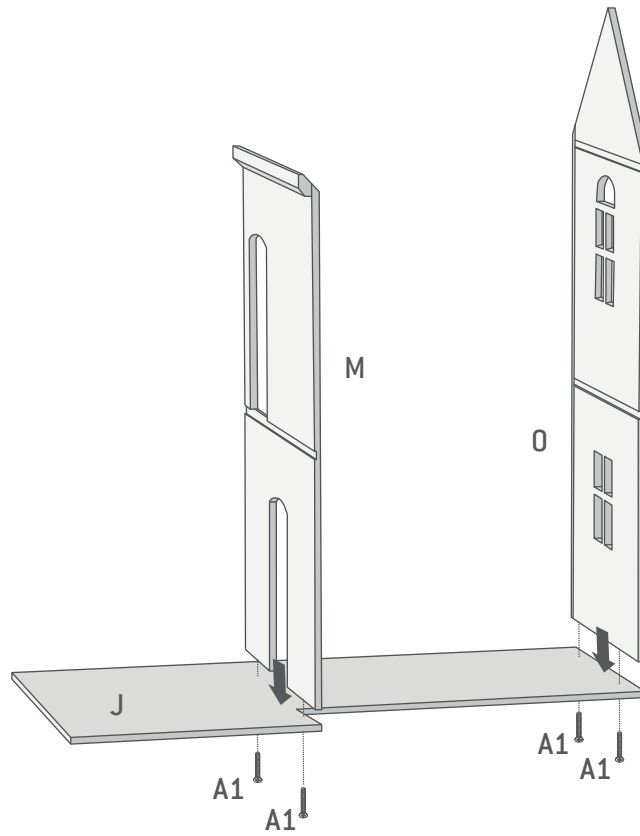
N x 1



O x 1

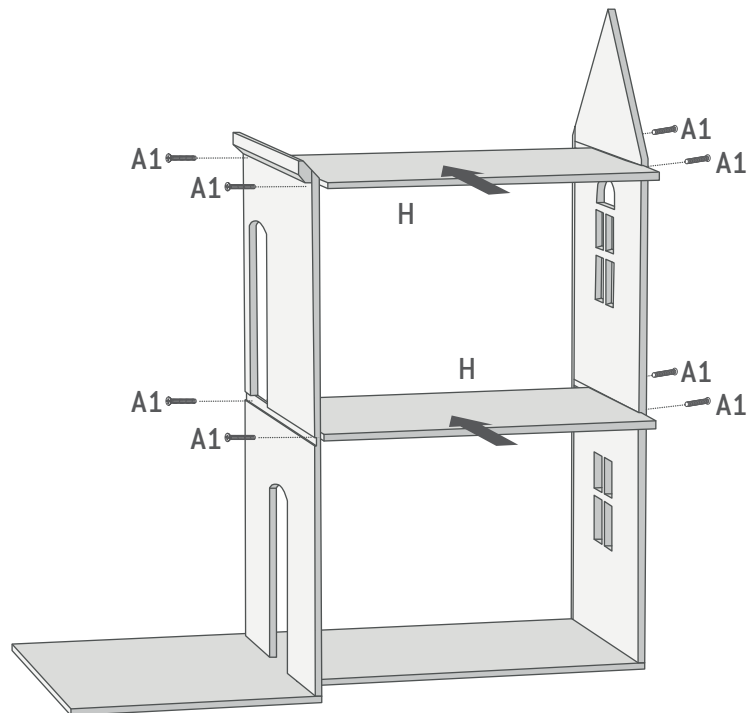
STEP 1:

 A1 x 4



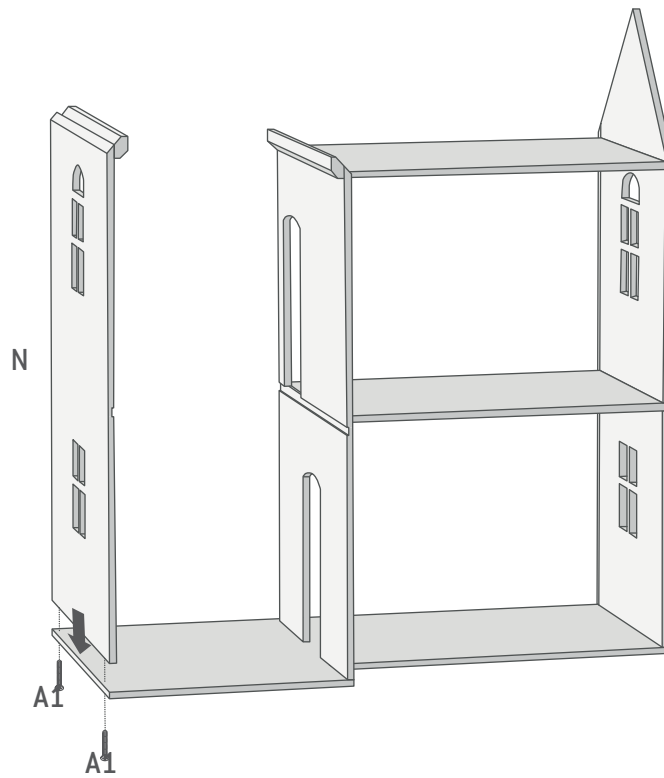
STEP 2:

 A1 x 8



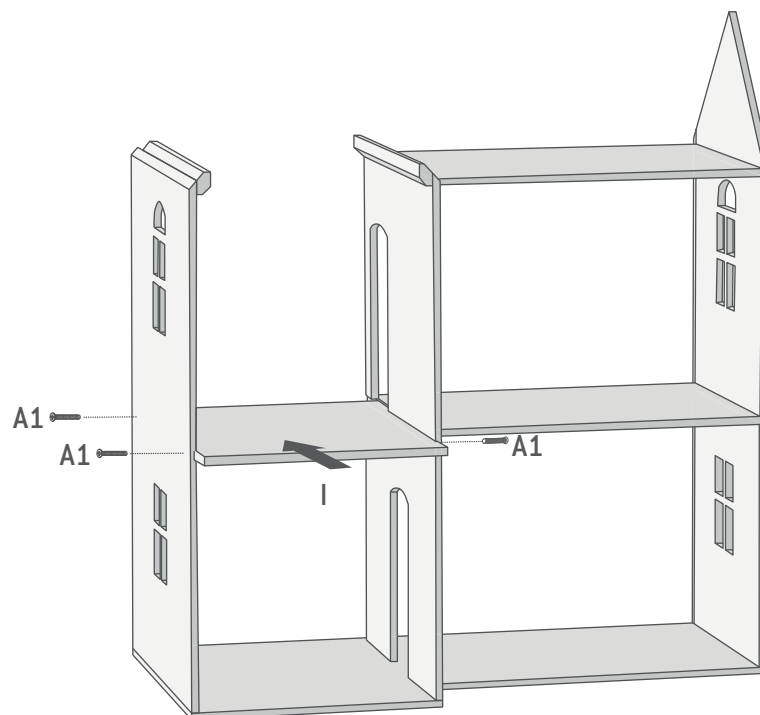
STEP 3:

 A1 x 2

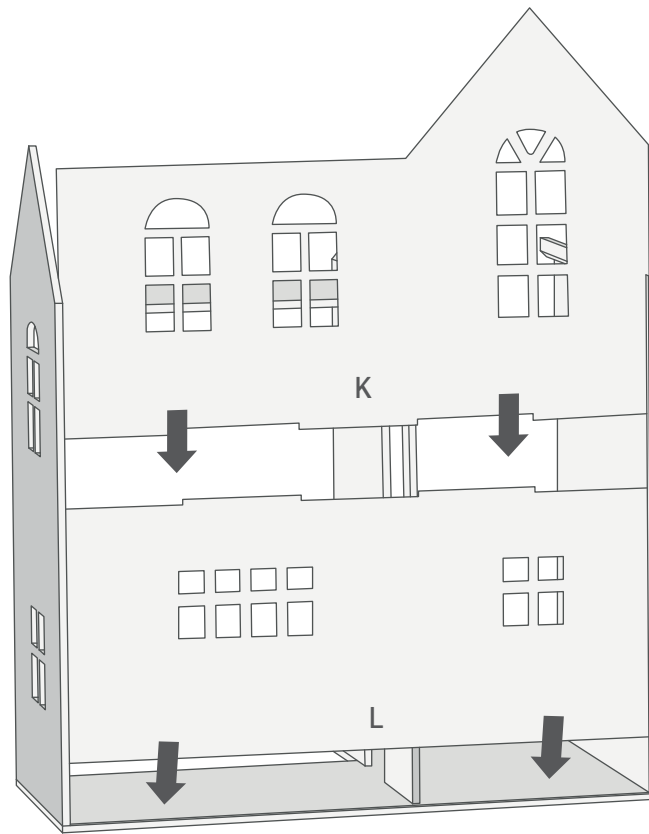


STEP 4:

 A1 x 3

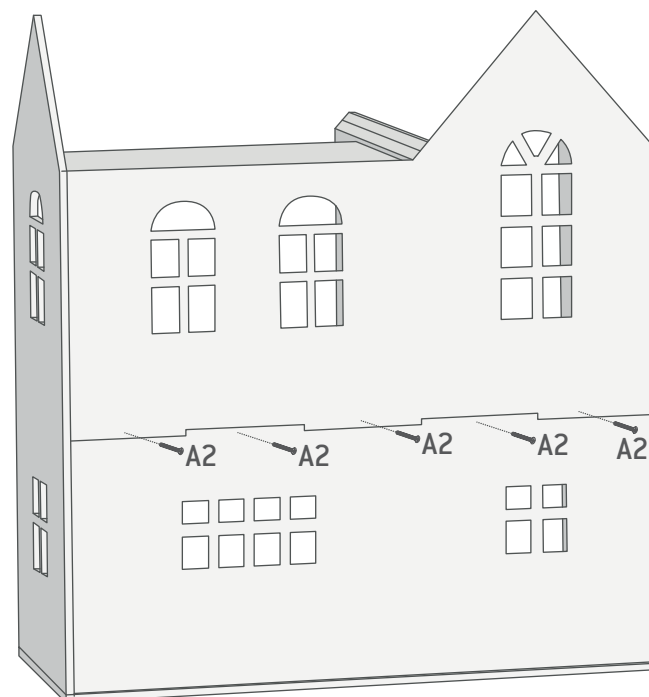


STEP 5:



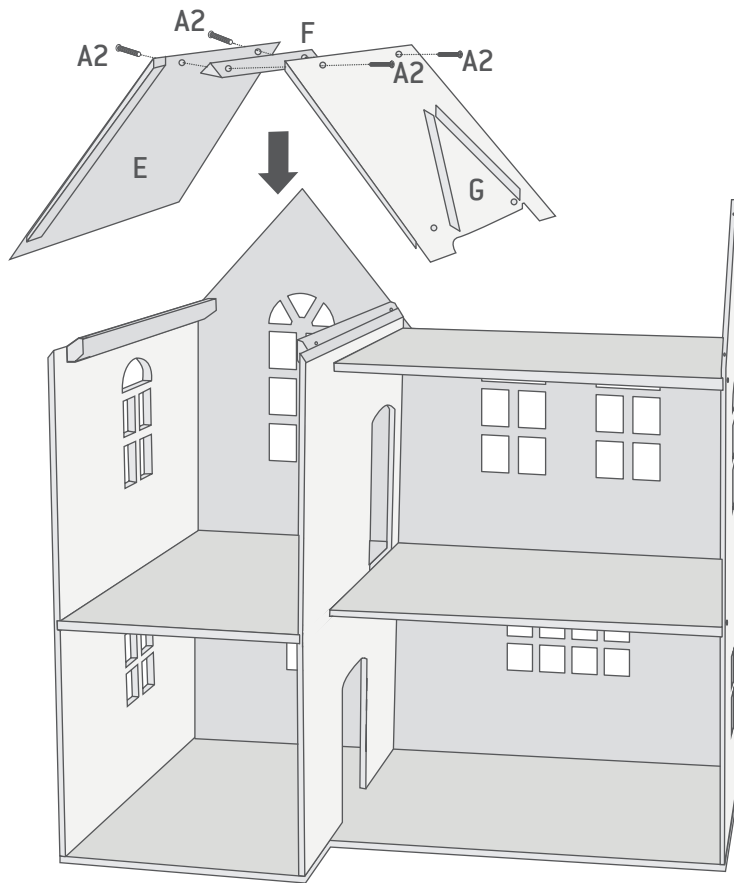
STEP 6:

 A2 x 5



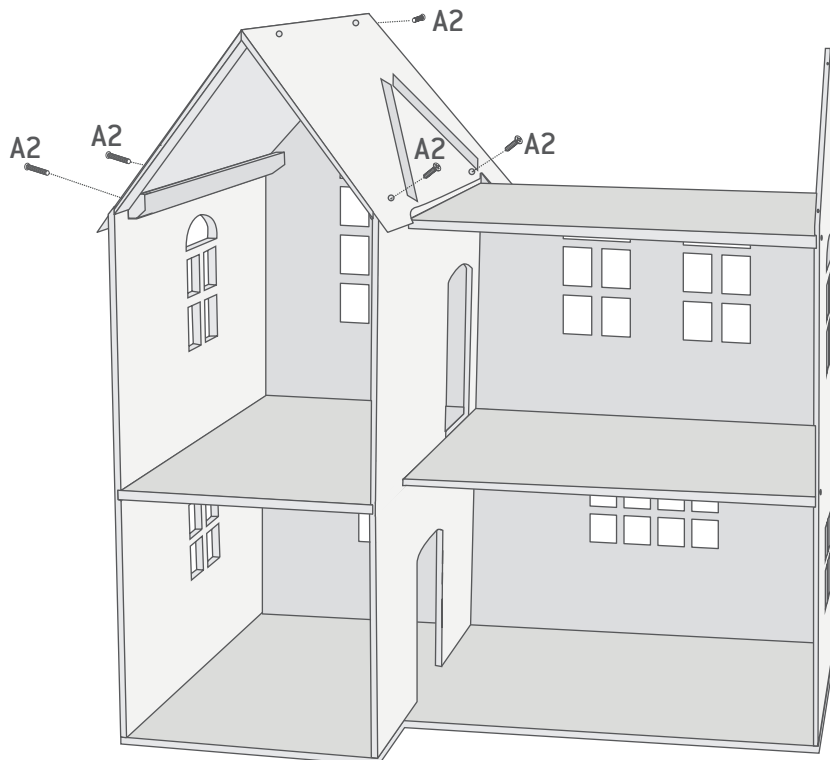
STEP 7:

 A2 x 4



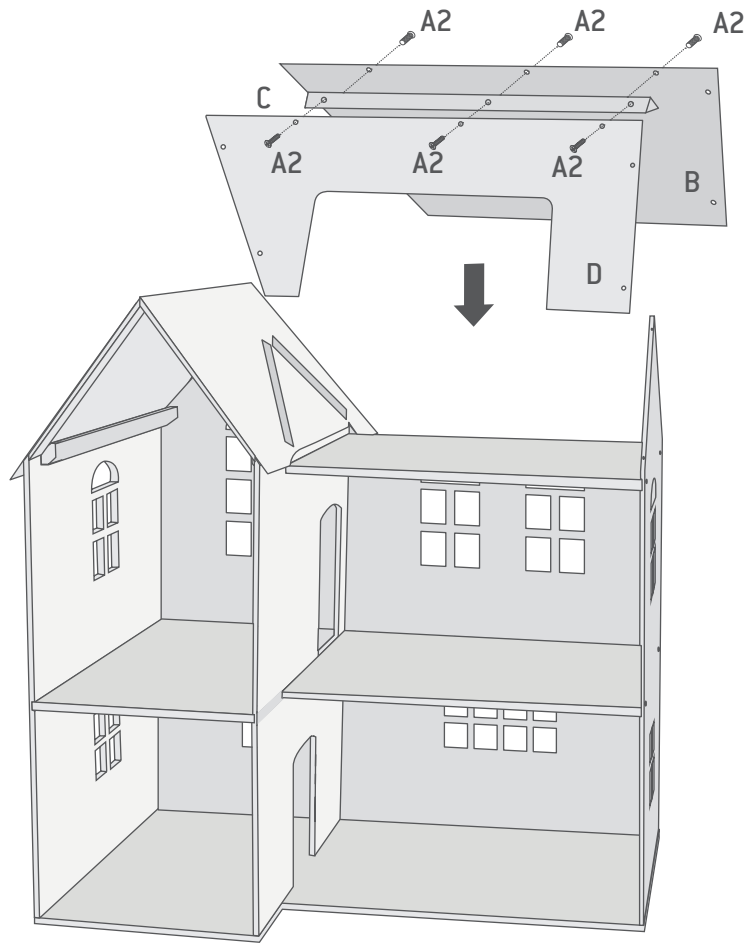
STEP 8:

 A2 x 5



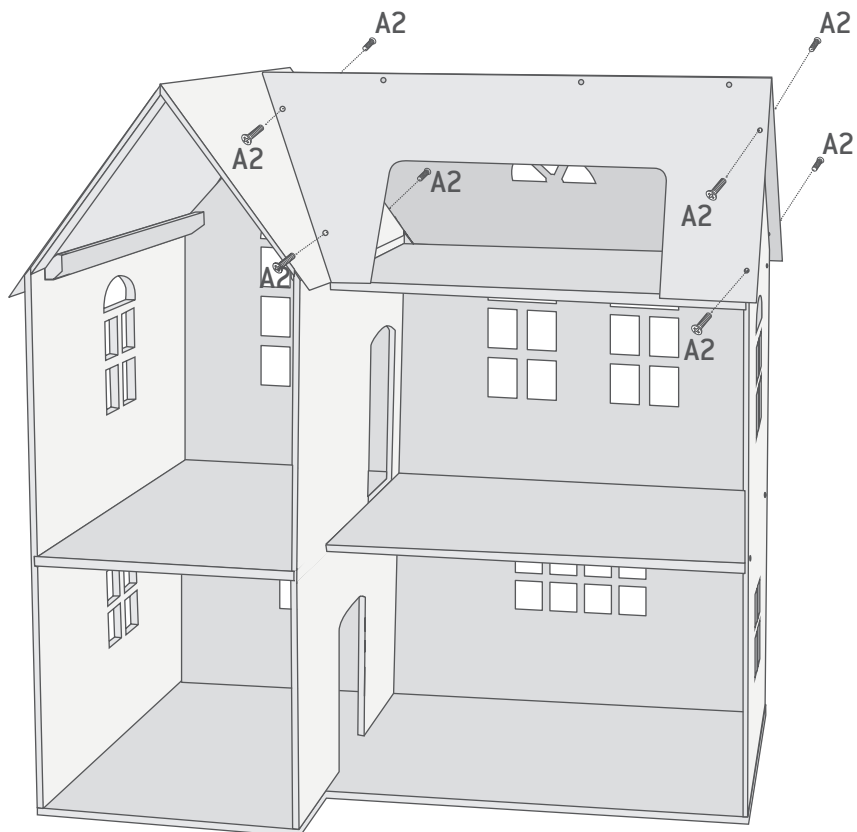
STEP 9:

 A2 x 6

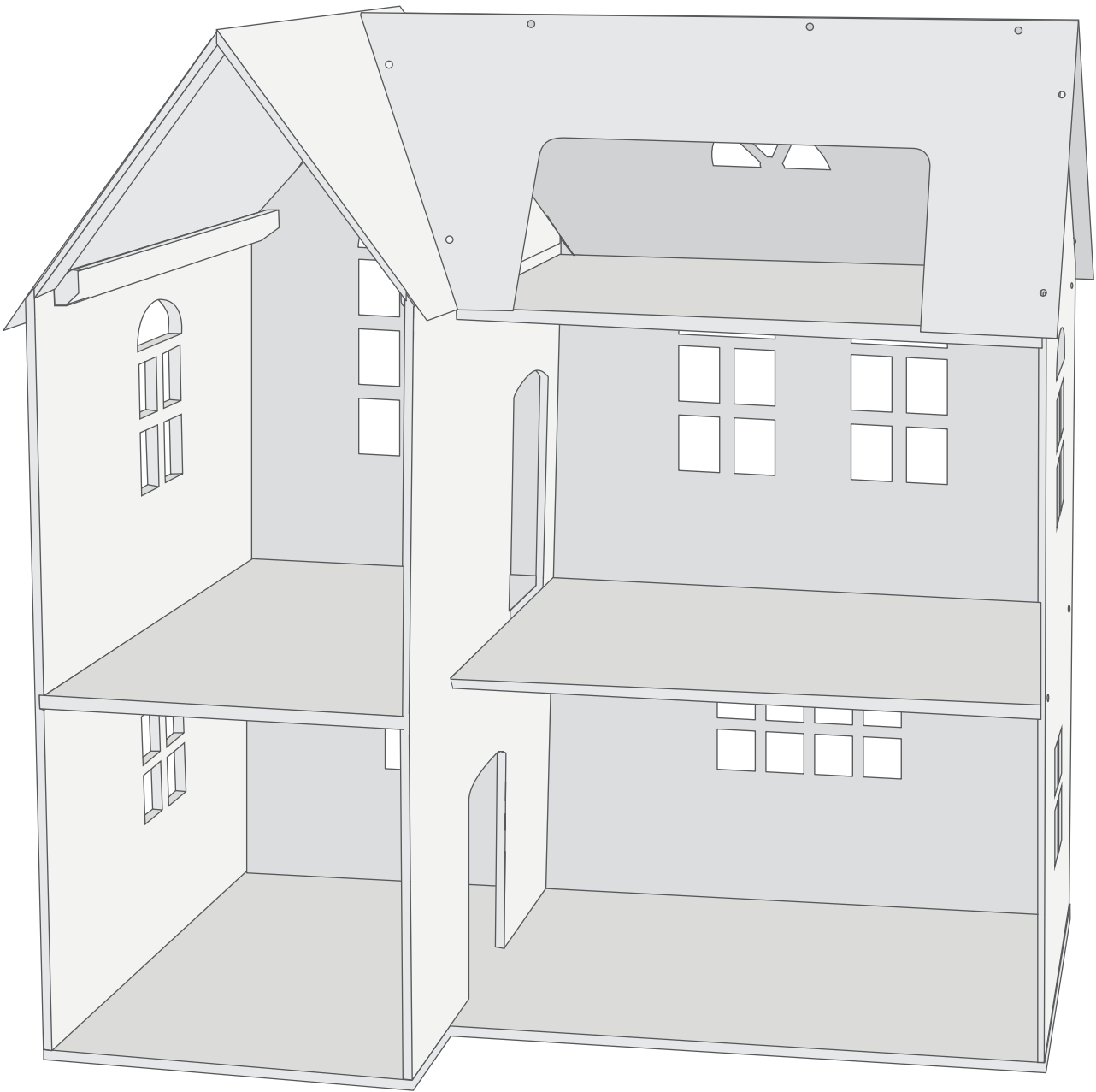


STEP 10:

 A2 x 8

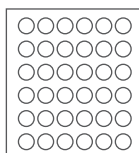


FINAL:



Optional:

Hide the screws with the stickers from the sticker sheet.



Stickers